

BGA 30.0

STIHL



2 - 20

Instruction Manual



Contents

1	Introduction.....	2
2	Guide to Using this Manual.....	2
3	Overview.....	2
4	Safety Precautions.....	3
5	Preparing the Blower for Operation.....	9
6	Charging the Battery, LEDs.....	10
7	Removing and Fitting the Battery.....	11
8	Switching the Blower On/Off.....	11
9	Testing the Blower and Battery.....	11
10	Operating the Blower.....	12
11	After Finishing Work.....	12
12	Transporting.....	12
13	Storing.....	12
14	Cleaning.....	13
15	Maintenance and Repairs.....	13
16	Troubleshooting.....	14
17	Specifications.....	15
18	Spare Parts and Accessories.....	16
19	Disposal.....	16
20	EC Declaration of Conformity.....	16
21	UKCA Declaration of Conformity.....	17
22	Addresses.....	17
23	General Power Tool Safety Warnings.....	17

1 Introduction

Dear Customer,

Thank you for choosing STIHL. We develop and manufacture our quality products to meet our customers' requirements. The products are designed for reliability even under extreme conditions.

STIHL also stands for premium service quality. Our dealers guarantee competent advice and instruction as well as comprehensive service support.

STIHL expressly commit themselves to a sustainable and responsible handling of natural resources. This user manual is intended to help you use your STIHL product safely and in an environmentally friendly manner over a long service life.

We thank you for your confidence in us and hope you will enjoy working with your STIHL product.

N. Stihl

Dr. Nikolas Stihl

**IMPORTANT! READ BEFORE USING AND
KEEP IN A SAFE PLACE FOR REFERENCE.**

2 Guide to Using this Manual

2.1 Applicable Documentation

Local safety regulations apply.

- Read, understand and save the following documents in addition to this instruction manual:
 - Safety information for STIHL batteries and products with built in batteries:
www.stihl.com/safety-data-sheets

2.2 Symbols used with warnings in the text



WARNING

- This symbol indicates dangers that can cause serious injuries or death.
 - The measures indicated can avoid serious injuries or death.

NOTICE

- This symbol indicates dangers that can cause damage to property.
 - The measures indicated can avoid damage to property.

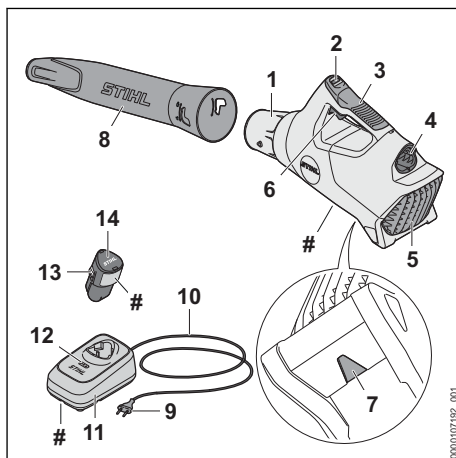
2.3 Symbols in Text



This symbol refers to a chapter in this instruction manual.

3 Overview

3.1 Blower, battery and charger



1 Nozzle

The nozzle directs and concentrates the air stream.

2 LEDs

The LEDs indicate the state of charge of the battery and any errors.

3 Control handle

The control handle is used to operate, control and carry the blower.

4 Battery compartment

The battery compartment holds the battery.

5 Shield

The shield protects the user from moving parts inside the blower.

6 Trigger

The trigger switches the blower on and off.

7 Ring

The ring serves to hang up the blower.

8 Blower tube

The blower tube directs the air stream.

9 Mains plug

The mains plug connects the connecting cable to a wall socket.

10 Connecting cable

The connecting cable connects the charger to the mains plug.

11 Charger

The charger charges the battery.

12 LEDs

The LEDs indicate the state of charge of the battery and any errors.

13 Locking hook

The locking hook holds the battery in place in the battery compartment.

14 Battery

The battery supplies power to the blower.

Rating plate with machine number**3.2 Symbols**

Meanings of symbols that may be on the blower, battery and charger:



In this position, the blower tube is locked.



In this position, the blower tube is unlocked.



Guaranteed sound power level in accordance with Directive 2000/14/EC in dB(A) for the purpose of comparing the sound emissions of products.



The information next to the symbol indicates the energy content of the battery according to the cell manufacturer's speci-

cation. The energy content available in operation is lower.



Operate the electric product in a dry place, indoors only.



Do not dispose of the product with your household waste.



Read and understand the User Manual and keep it in a safe place for reference.

4 Safety Precautions**4.1 Warning Signs****4.1.1 Blower**

Meanings of warning symbols on the blower:



Observe safety notices and take the necessary precautions.



Read and understand the User Manual and keep it in a safe place for reference.



Comply with the safety instructions concerning ejected objects and take the necessary precautions.



Wear safety glasses.



Secure long hair so that it cannot be pulled into the blower.



Maintain a safe distance.



Remove the battery during work interruptions, transport, storage, maintenance or repair.



Protect the blower against rain and moisture.

4.1.2 Battery

Meaning of warning symbols on the battery:



Observe safety notices and take the necessary precautions.



Read and understand the User Manual and keep it in a safe place for reference.



Protect the battery against heat and fire.



Do not immerse the battery in liquids.

4.1.3 Charger

Meanings of the warning signs on the charger:



Observe safety notices and take the necessary precautions.



Read and understand the User Manual and keep it in a safe place for reference.



Protect the charger from rain and dampness.

4.2 Intended Use

The STIHL BGA 30.0 blower is designed for blowing leaves, grass, paper and similar materials.

Do not use the blower in the rain.

The STIHL AS battery supplies power to the blower.

This charger charges the STIHL AS:
STIHL ALS 31, AL 1, AL 5, AL 5-2 battery.

▲ WARNING

- Batteries and chargers not explicitly approved for the blower by STIHL may cause fires or explosions. Persons may be seriously or fatally injured, and property may be damaged.
 - ▶ Use the blower with a STIHL AS battery.
 - ▶ Charge the STIHL AS battery with these chargers: STIHL ALS 31, AL 1, AL 5, AL 5-2.
- Using the blower, battery or charger for purposes for which they were not designed may result in serious or fatal injuries and damage to property.
 - ▶ Use the blower, battery and charger as described in this User Manual.

4.3 Requirements for the user

▲ WARNING

- Users without adequate training or instruction cannot recognize or assess the risks involved in using the blower, battery and charger. The

user or other persons may sustain serious or fatal injuries.



- ▶ Read and understand the User Manual and keep it in a safe place for reference.
- ▶ If you pass on the blower, battery or the charger to another person: Always give them the User Manual.
- ▶ Make sure that the user meets the following conditions:
 - The user is rested.
 - The user is physically, sensorially and mentally able to operate and work with the blower, battery and charger. If the user is able to operate the equipment but has physical, sensory or mental limitations, the user may only work with the equipment under the supervision of or after receiving instruction from a responsible person.
 - The user is able to recognize and assess the risks involved in using the blower, battery and charger.
 - The user is an adult or is being trained in an occupation under supervision according to national regulations.
 - The user has received instruction from a STIHL authorized dealer or other experienced user before working with the blower or using the charger for the first time.
 - The user is not under the influence of alcohol, medication or drugs.
- ▶ If you are unsure: Contact a STIHL authorized dealer.

4.4 Clothing and equipment

▲ WARNING

- Long hair may be pulled into the blower while working. This may result in serious injury to the user.
 - ▶ Tie up and secure long hair above your shoulders.
- Objects can be thrown at high speed during operation. This may result in injury to the user.
 - ▶ Wear close-fitting safety glasses. Suitable protective glasses tested in accordance with European standard EN 166, EN ISO 16321 or in accordance with national standards and bearing the corresponding label are available from retailers.
 - ▶ Wear long pants.



- Dust may be whipped up during operation. Whipped up dust can damage the respiratory passages and cause allergic reactions.
 - ▶ If dust is generated: Wear a dust respirator mask.
- Unsuitable clothing can snag on wood or scrub and may become caught in the blower. Users not wearing suitable clothing may be seriously injured.
 - ▶ Wear close-fitting clothing.
 - ▶ Remove scarves and jewelry.
- Wearing unsuitable footwear may cause the user to slip. This may result in injury to the user.
 - ▶ Wear sturdy, closed-toed footwear with non-slip soles.

4.5 Work Area and Surroundings

4.5.1 Blower

⚠ WARNING

- Bystanders, children and animals are not aware of the dangers of the blower and objects being thrown into the air and cannot assess them. This may result in serious injury to bystanders, children and animals and damage to property.



- ▶ Do not allow bystanders, children or animals within 15 meters of the work area.

- ▶ Maintain a clearance of 15 meters from objects.
- ▶ Do not leave the blower unattended.
- ▶ Ensure that children cannot play with the blower.
- The blower is not waterproof. If you work in the rain or in a damp environment, an electric shock may occur. This can result in injuries to the user and may damage the blower.
 - ▶ Do not work in the rain or in a damp environment.
- Electrical components of the blower can produce sparks. Sparks may cause fires and explosions in highly flammable or explosive environments. Persons may be seriously or fatally injured, and property may be damaged.
 - ▶ Do not work in a highly flammable or explosive environment.



4.5.2 Battery

⚠ WARNING

- Bystanders, children and animals cannot recognize or assess the dangers of the battery. Bystanders, children and animals may be seriously injured.
 - ▶ Keep bystanders, children and animals away from the work area.
 - ▶ Do not leave the battery unattended.
 - ▶ Make sure that children cannot play with the battery.
- The battery is not protected against all ambient conditions. If the battery is exposed to certain ambient conditions, the battery may catch fire, explode or be irreparably damaged. This may result in serious injury to people and damage to property.



- ▶ Protect battery from heat and fire.
- ▶ Do not throw the battery into a fire.



- ▶ Do not charge, use and store the battery outside of the specified temperature limits, 17.5.



- ▶ Do not immerse the battery in liquids.

- ▶ Keep battery away from small metal parts.
- ▶ Do not expose the battery to high pressure.
- ▶ Do not expose the battery to microwaves.
- ▶ Protect the battery against chemicals and salts.

4.5.3 Charger

⚠ WARNING


- Bystanders and children are not aware of and cannot assess the dangers of a charger or electric current. Bystanders, children and animals may be seriously or fatally injured.
 - ▶ Keep bystanders, children and animals away from the work area.
 - ▶ Make sure that children cannot play with the charger.
- The charger is not waterproof. If you work in the rain or in a damp environment, an electric shock may occur. The user may be injured and the charger may be damaged.



- ▶ Do not operate it in the rain or in a damp environment.

- The charger is not protected against all ambient conditions. If the charger is exposed to certain ambient conditions, it may catch fire or

explode. This may result in serious injury to people and damage to property.

- ▶ Operate the charger in an enclosed, dry room.
- ▶ Do not operate the charger in a flammable environment or in an explosive environment.
- ▶ Do not operate the charger on a readily combustible surface.
- ▶ Do not use and store the charger outside of the specified temperature limits,  17.5.
- People may trip over the connecting cable. People may be injured and the charger may be damaged.
 - ▶ Lay the connecting cable flat on the floor.

4.6 Safe Condition

4.6.1 Blower

The blower is in a safe condition if the following conditions are fulfilled:

- The blower is undamaged.
- The blower must be clean and dry.
- The controls function properly and have not been modified.
- Original STIHL accessories are fitted.
- The accessories are correctly installed.

WARNING


- If not in safe condition, components may no longer operate correctly, and safety devices may be rendered ineffective. There is a risk of serious or fatal injury.
 - ▶ Never use a damaged blower.
 - ▶ If the blower is dirty or wet: Clean the blower and allow it to dry.
 - ▶ If the battery compartment is moist or wet: Allow the battery compartment to dry.
 - ▶ Do not modify the blower. Exception: Attaching a blower tube approved for this blower model.
 - ▶ If the controls do not function properly: Do not work with the blower.
 - ▶ Fit original STIHL accessories designed for this blower model.
 - ▶ Install accessories as described in this User Manual or in the User Manual for the accessories.
 - ▶ Do not insert objects into the openings in the blower.
 - ▶ Replace worn or damaged labels.
 - ▶ If you are unsure: Contact a STIHL authorized dealer.

4.6.2 Battery

The battery is in a safe condition if the following points are observed:

- Battery is undamaged.
- The battery is clean and dry.
- Battery functions properly and has not been modified.

WARNING

- A battery that is not in a safe condition cannot operate safely. Persons may be seriously injured.
 - ▶ Never work with a damaged battery.
 - ▶ Never attempt to charge a damaged or defective battery.
 - ▶ If the battery is dirty: Clean the battery.
 - ▶ If the battery is wet or damp: Allow the battery to dry,  17.6.
 - ▶ Never attempt to modify the battery.
 - ▶ Never insert objects in the battery's openings.
 - ▶ Never bridge the battery's contacts with metallic objects (short circuit).
 - ▶ Do not open the battery.
 - ▶ Replace worn or damaged labels.
- Fluid may leak from a damaged battery. If that liquid comes into contact with the skin or eyes, the skin or eyes may be irritated.
 - ▶ Avoid contact with the liquid.
 - ▶ If skin contact occurs: Wash affected areas of skin with plenty of water and soap.
 - ▶ In the event of contact with eyes: Rinse eyes with plenty of water for at least 15 minutes and consult a doctor.
- A damaged or defective battery may smell unusual, emit smoke or burn. Persons may be seriously or fatally injured, and property may be damaged.
 - ▶ If the battery smells unusual or emits smoke: do not use the battery and keep it away from combustible substances.
 - ▶ If the battery catches fire: Attempt to extinguish the battery with a fire extinguisher or water.

4.6.3 Charger

The charger is in a safe condition if the following points are observed:

- Charger is undamaged.
- Charger is clean and dry.

WARNING

- If components do not comply with safety requirements, they will no longer function properly and safety devices may be rendered

inoperative. This can result in serious or fatal injuries.

- ▶ Do not use a damaged charger.
- ▶ If the charger is dirty or wet: Clean the charger and allow it to dry.
- ▶ Never attempt to modify the charger.
- ▶ Never insert objects in the charger's openings.
- ▶ Never bridge the charger's contacts with metallic objects (short circuit).
- ▶ Do not open the charger.

4.7 Operation

WARNING

- The user cannot concentrate on the work in certain situations. The user may stumble, fall and be seriously injured.
 - ▶ Work calmly and carefully.
 - ▶ If light and visibility are poor: Do not work with the blower.
 - ▶ Operate the blower alone.
 - ▶ Do not work above shoulder height.
 - ▶ Watch out for obstacles.
 - ▶ Stand on the ground while working and keep a good balance. If it is necessary to work at heights: Use a lift bucket or a safe platform.
 - ▶ If you begin to feel tired: Take a break.
 - ▶ Blow sweep with the wind.
- Objects can be thrown through the air at high speed during operation. Bystanders and animals may be injured and damage to property may occur.
 - ▶ Do not direct the air blast towards bystanders, animals or objects.
- If the behavior of the blower changes during operation or feels unusual, it may no longer be in a safe condition. This can result in serious injuries and damage to property.
 - ▶ Stop work, remove the battery and contact your STIHL servicing dealer for assistance.
- Blower vibrations may occur during operation.
 - ▶ Take regular breaks.
 - ▶ If signs of circulation problems occur: Seek medical advice.
- The dust whipped up may cause the blower to be electrostatically charged. In certain conditions (e.g. dry environment) the blower may discharge suddenly and emit sparks. Sparks may cause a fire or an explosion in an easily combustible or explosive environment. This can result in serious or fatal injuries and damage to property.
 - ▶ Do not work in an easily combustible or explosive environment.

4.8 Charging

WARNING

- A damaged or defective charger may produce an unusual smell or emit smoke during the charging process. This may result in personal injuries and damage to property.
 - ▶ Disconnect the plug from the wall outlet.
- The charger can overheat and cause a fire if heat dissipation is inadequate. This can result in serious or fatal injuries and damage to property.
 - ▶ Do not cover the charger.

4.9 Connecting to the power supply

Contact with live components may occur for the following reasons:


- The connecting cable or the extension cord is damaged.
- The mains plug of the connecting cable or extension cord is damaged.
- The socket is not properly installed.

DANGER

- Contact with live parts may result in electric shock. This may result in serious or fatal injury to the user.
 - ▶ Make sure that the connecting cable, extension cord and their mains plugs are undamaged.



If the connecting cable or the extension cord is damaged:

- ▶ Do not touch the damaged area.
- ▶ Disconnect the mains plug from the power supply.
- ▶ Make sure your hands are dry before touching the connecting cable, extension cord or mains plugs.
- ▶ Plug the mains plug of the connecting cable or extension cord into a properly installed, shockproof socket with the correct fuse rating.
- ▶ Install the charger with a ground fault circuit interrupter (30 mA, 30 ms).
- A damaged or unsuitable extension cable can result in electric shock. There is a risk of serious or fatal injury.
 - ▶ Use an extension cable with the correct cable cross-section,  17.4.

WARNING

- Overvoltage can occur in the charger if the line voltage or frequency are incorrect during charging. The charger may be damaged.

- ▶ Make sure that the mains voltage and the mains frequency of the power supply match the data on the rating plate of the charger.
- If the charger is connected to a power strip, electrical components may be overloaded during the charging process. The components may overheat and cause a fire. Persons may be seriously or fatally injured, and property may be damaged.
 - ▶ Ensure that the technical specifications for the power strip are not exceeded by the information on the rating plate of the charger and of all electrical devices connected to the power strip.
- An incorrectly routed connecting cable or extension cord may be damaged, and people may trip over it. People may be injured, and the connecting cable or extension cord may be damaged.
 - ▶ Route and mark the connecting cable and extension cord so that people will not trip over them.
 - ▶ Route the connecting cable and extension cord so that they are not under tension or tangled.
 - ▶ Route the connecting cable and extension cord so that they will not be damaged, kinked or crushed and will not be chafed.
 - ▶ Protect the connecting cable and extension cord from heat, oil and chemicals.
 - ▶ Lay the connecting cable and extension cord on a dry surface.
- The extension cable warms up in operation. If that heat cannot escape, it may cause a fire.
 - ▶ If using a cable reel: completely unroll the cable reel.
- If wiring and pipes are laid in the wall, they may be damaged if the charger is mounted on the wall. Contact with wiring can result in electric shock. This may result in serious injury to people and damage to property.
 - ▶ Make sure there is no wiring or pipes in the wall at the proposed mounting site.
- If the charger is not mounted on the wall as described in this User Manual, the charger or the battery may fall or the charger may overheat. This may result in injury to people and damage to property.
 - ▶ Mount the charger on a wall as described in this User Manual.
- If the charger is mounted on a wall with the battery inserted, the battery may fall out of the charger. This may result in injury to people and damage to property.
 - ▶ Mount the charger on the wall first before inserting the battery.

4.10 Transporting

4.10.1 Blower

⚠ WARNING

- The blower can turn over or move while being transported. This may result in personal injuries and damage to property.



- ▶ Remove the battery.
- ▶ Secure the blower with lashing straps or a net to prevent it turning over and moving.

4.10.2 Battery

⚠ WARNING

- The battery is not protected against all ambient conditions. The battery may be damaged if it is exposed to certain ambient conditions, and damage to property may occur.
 - ▶ Never transport a damaged battery.
- The battery may turn over or shift during transport. This may result in injury to people and damage to property.
 - ▶ Pack the battery in packaging in such a way that it cannot move.
 - ▶ Secure the packaging so that it cannot move.

4.10.3 Charger

⚠ WARNING

- The charger may turn over or move while being transported. This may result in personal injuries and damage to property.
 - ▶ Disconnect the plug from the wall outlet.
 - ▶ Remove the battery.
 - ▶ Secure the charger with lashing straps, belts or a net to prevent it turning over and moving.
- The connecting cable must not be used for carrying the charger. The connecting cable and the charger may be damaged.
 - ▶ Wind up the connecting cable and attach it to the charger.

4.11 Storing

4.11.1 Blower

⚠ WARNING

- Children are not aware of and cannot assess the dangers of a blower and can be seriously injured.



- ▶ Remove the battery.

- ▶ Store the blower out of the reach of children.

- Dampness can corrode the electrical contacts on the blower and metal components. The blower may be damaged.



- ▶ Remove the battery.

- ▶ Store the blower in a clean and dry condition.

4.11.2 Battery

⚠ WARNING

- Children are not aware of and cannot assess the dangers of the battery. Children may be seriously injured.
 - ▶ Store the battery out of the reach of children.
- The battery is not protected against all ambient conditions. If the battery is exposed to certain ambient conditions, the battery may be irreparably damaged.
 - ▶ Store the battery in a clean and dry condition.
 - ▶ Store the battery in an enclosed space.
 - ▶ Store the battery separately from the blower.
 - ▶ If the battery is stored in the charger, disconnect the mains plug and store the battery at a state of charge between 40% and 60%.
 - ▶ Do not store the battery outside of the specified temperature limits, 17.5.

4.11.3 Charger

⚠ WARNING

- Children are not aware of and cannot assess the dangers of a charger. Children can be seriously injured or killed.
 - ▶ Disconnect the plug from the wall outlet.
 - ▶ Store the charger out of reach of children.
- The charger is not protected against all ambient conditions. If the charger is exposed to certain ambient conditions, the charger may be damaged.
 - ▶ Disconnect the plug from the wall outlet.
 - ▶ If the charger is hot: Allow the charger to cool down.
 - ▶ Store the charger in a clean, dry place.
 - ▶ Store the charger in an enclosed room.

- ▶ Do not store the charger outside of the specified temperature limits, 17.5.
- The connecting cable should not be used for carrying the charger or hanging up the charger. The connecting cable and the charger may be damaged.
 - ▶ Hold the charger by the housing in a secure grip.
 - ▶ Hang the charger on the wall mounting.

4.12 Cleaning, Maintenance and Repair

⚠ WARNING

- If the battery is inserted when carrying out cleaning, servicing or repairs, it is possible for the blower to be switched on unintentionally. This may result in serious injury to people and damage to property.



- ▶ Remove the battery.

- Sharp cleaning agents, cleaning with a water jet or pointed objects can damage the blower, the battery and the charger. If the blower, battery or charger are not cleaned as described in this instruction manual, components may no longer function properly or safety devices may be rendered inoperative. They may cause serious injury to persons.
 - ▶ Clean the blower, battery and charger as described in this instruction manual.
- If the blower, battery or charge are not serviced or repaired correctly, components may no longer function properly or safety devices may be rendered inoperative. This may result in serious or fatal injury to people.
 - ▶ Do not attempt to service or repair the blower, battery or charger.
 - ▶ If the blower, battery or the charger require servicing or repairs: Contact your STIHL servicing dealer for assistance.

5 Preparing the Blower for Operation

5.1 Preparing the blower for operation

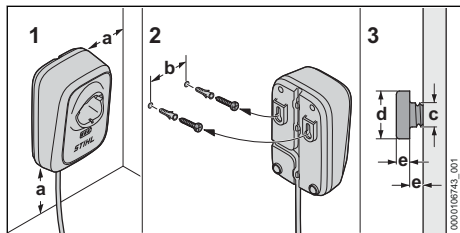
The following steps must be performed before commencing work:

- ▶ Ensure that the following components are in a safe condition:
 - Blower, 4.6.1.
 - Battery, 4.6.2.
 - Charger, 4.6.3.
- ▶ Check the battery, 9.2.
- ▶ Fully charge the battery, 6.2.
- ▶ Clean the blower, 14.1.
- ▶ Check the controls, 9.1.
- ▶ If it is not possible to carry out these steps: Do not use the blower and contact a STIHL authorized dealer.

6 Charging the Battery, LEDs

6.1 Mounting the charger on a wall

The charger can be mounted on a wall.



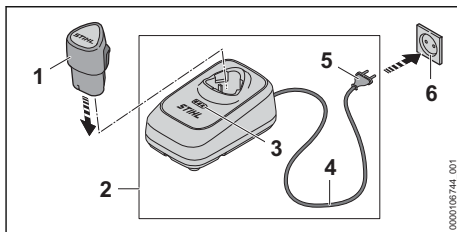
- ▶ Check the following points when mounting the charger on a wall:
 - Use suitable mounting materials.
 - The charger is level.
- ▶ The following dimensions are observed:
 - a = at least 100 mm
 - b = 54 mm
 - c = 4.5 mm
 - d = 9 mm
 - e = 2.5 mm

6.2 Charging the battery

The charging time depends on various factors, e.g. the battery temperature or the ambient temperature. For optimal performance, note the recommended temperature ranges, 17.6. The actual charging time may vary from the charging time indicated. The charging time is indicated at www.stihl.com/charging-times.

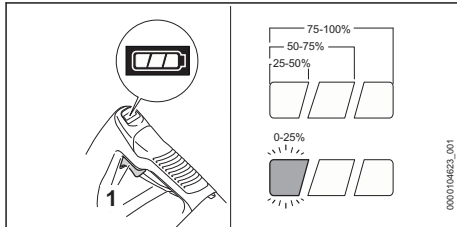
The charging process starts automatically when the mains plug is plugged into a socket and the battery is inserted into the charger. The charger switches off automatically when the battery is fully charged.

The battery and the charger warm up during charging.



- ▶ Insert the mains plug (5) in a convenient power outlet (6). The charger (2) starts and runs a self test. The LEDs (3) light up green for about 1 second.
- ▶ Fit the connecting cable (4) in place.
- ▶ Insert the battery (1) in the guides in the charger (2) and press it home as far as stop. The LEDs (3) light up or flash green. The battery (1) is being charged.
- ▶ When all LEDs (1) light up steady green: The battery (1) is now fully charged and can be removed from the charger (2). The brightness of the LEDs (3) will decrease after about 5 minutes.
- ▶ If the charger (2) is no longer being used: Disconnect the mains plug (5) from the socket (6).

6.3 Displaying the state of charge



- ▶ Insert the battery.
- ▶ Press the trigger (1). The LEDs light up green for about 5 seconds and indicate the state of charge.
- ▶ If the left LED flashes green: Charge the battery.

6.4 LEDs on the blower

The LEDs can indicate the state of charge of the battery or any errors. The LEDs can may light up steady or flash in green or red.


If the LEDs light up or flash green, the state of charge of the battery is indicated.

- ▶ If the right LED lights up or flashes red: Troubleshooting, 16.1. There is an error in the blower or battery.

6.5 LED on charger

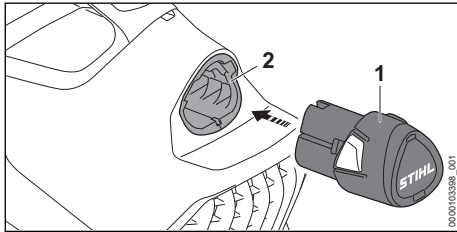
The LED indicates the operating status of the charger or faults. The LED can glow or flash green, orange or red.

If the LED glows or flashes green, the battery is being charged.

- ▶ If the LED lights up or flashes red or orange:
Troubleshooting,  16.
There is an error in the charger or battery.

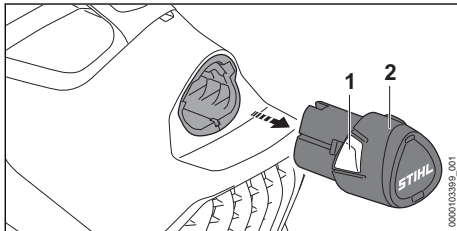
7 Removing and Fitting the Battery

7.1 Inserting the battery



- ▶ Push the battery (1) into the battery compartment (2) as far as stop.
The battery (1) engages in position with a click.

7.2 Removing the battery

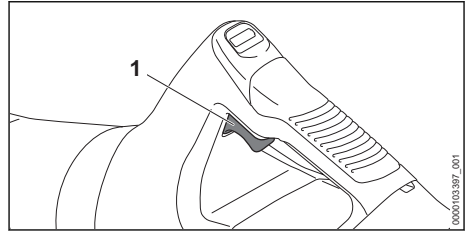


- ▶ Depress both locking hooks (1).
The battery (2) is now unlocked and can be removed.

8 Switching the Blower On/Off

8.1 Switching on the blower

- ▶ Hold the blower by the control handle with one hand and wrap your thumb around the control handle.



- ▶ Press the trigger (1) with your index finger and keep it pressed.
The blower accelerates and air flows out of the nozzle.

The further the trigger (1) is pressed, the more air flows out of the nozzle.

8.2 Turning off the blower

- ▶ Release the trigger.
Air stops flowing out of the nozzle.
- ▶ If air continues to flow out of the nozzle:
Remove the battery and consult a STIHL servicing dealer.
The blower is defective.

9 Testing the Blower and Battery

9.1 Checking the controls

Trigger

- ▶ Remove the battery.
- ▶ Press the trigger.
- ▶ If the trigger is stiff or does not spring back to its idle position: Do not use the blower and instead contact a STIHL authorized dealer.
The trigger is defective.

Switching on the blower

- ▶ Insert the battery.
- ▶ Press and hold the trigger.
Air flows out of the nozzle.
- ▶ If the right LED is flashing red: Remove the battery and contact a STIHL authorized dealer.
There is an error in the blower.
- ▶ Release the trigger.
Air stops flowing out of the nozzle.
- ▶ If air continues to flow out of the nozzle:
Remove the battery and consult a STIHL servicing dealer.
The blower is defective.

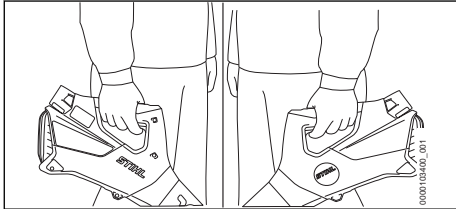
9.2 Checking the battery

- ▶ Insert the battery.

- ▶ Press the trigger
The LEDs on the blower light up or flash.
- ▶ If the LEDs do not light up or flash: Do not use the blower and battery and contact a STIHL authorized dealer.
There is an error in the blower or battery.

10 Operating the Blower

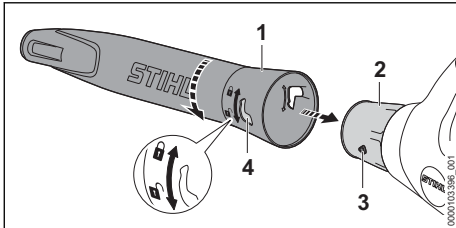
10.1 Holding and controlling the blower



- ▶ Hold and control the blower with one hand on the control handle and wrap your thumb around the control handle.

10.2 Attaching the blower tube

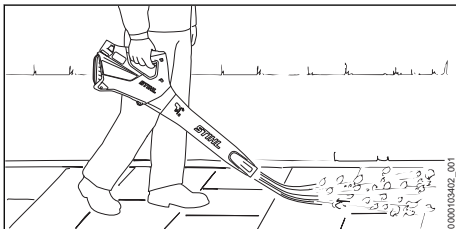
- ▶ Switch off the blower.



- ▶ Align the pin (3) and hole (4).
- ▶ Push the blower tube (1) onto the nozzle (2).
- ▶ Turn the blower tube (1) to position 0.

You can use the blower without a blower tube, e.g., to blow leaves, paper or similar matter from tables.

10.3 Blowing



- ▶ Point the blower tube at the ground.
- ▶ Walk forward slowly and steadily.

During work breaks, place the blower on a dry surface.

For optimal performance, observe the recommended temperature ranges, 17.6.

11 After Finishing Work

11.1 After Finishing Work

- ▶ Turn off the blower and remove the battery.
- ▶ If the blower is wet: Allow the blower to dry.
- ▶ If the battery is moist or wet: Allow the battery to dry, 17.6.
- ▶ Clean the blower.
- ▶ Clean the battery.

12 Transporting

12.1 Transporting the Blower

- ▶ Switch off the blower and remove the battery.

Carrying the Blower

- ▶ Carry the blower by the control handle.

Transporting the Blower in Vehicles

- ▶ Secure the blower to prevent turnover and movement.

12.2 Transporting the battery

- ▶ Turn off the blower and remove the battery.
- ▶ Check that the battery is in a safe condition.
- ▶ Pack the battery in packaging in such a way that it cannot move inside the packaging.
- ▶ Secure the packaging so that it cannot move.

The battery is subject to the Carriage of Dangerous Goods regulations. The battery is classified as UN 3480 (lithium ion batteries) and has been tested pursuant to UN Manual Tests and Criteria Part III, Subsection 38.3.

The transport regulations can be found at www.stihl.com/safety-data-sheets.

12.3 Transporting the charger

- ▶ Disconnect the mains plug from the socket.
- ▶ Remove the battery.
- ▶ Roll up the connecting cable.
- ▶ Transporting the charger in a vehicle: Secure the charger with lashing straps, belts or a net to prevent it tipping over and shifting.

13 Storing


13.1 Storing the Blower

- ▶ Turn off the blower and remove the battery.

- The blower should be stored in such a way that the following conditions are fulfilled:
 - The blower cannot topple over and cannot move.
 - The blower must be out of the reach of children.
 - The blower must be clean and dry.

13.2 Storing the battery


STIHL recommends storing the battery in a state of charge between 40% and 60%.

- The battery should be stored in such a way that the following conditions are met:
 - The battery is out of the reach of children.
 - The battery is clean and dry.
 - The battery is in an enclosed space.
 - Battery is stored separately from the blower.
 - If the battery is stored in the charger, disconnect the mains plug and store the battery at a state of charge between 40% and 60%.
 - The battery is not stored outside of the specified temperature limits,  17.5.

NOTICE

- If the battery is not stored as described in this user manual, the battery may become deeply discharged and irreparably damaged.
 - Charge a discharged battery before storing it. STIHL recommends storing the battery in a state of charge between 40% and 60%.
 - Store the battery separately from the blower.

13.3 Storing the charger

- Disconnect the mains plug from the socket.
- Comply with the following points when storing the charger:
 - Charger is out of the reach of children.
 - The charger is clean and dry.
 - Charger is in an enclosed space.
 - Charger is not hanging from the connecting cable.
 - The charger is not stored outside of the specified temperature limits,  17.5.

14 Cleaning

14.1 Cleaning the blower

- Switch off the blower and remove the battery.

- Clean blower with a damp cloth.
- Clean vents with a paintbrush.
- Clean the shield with a paintbrush or soft brush.
- Remove foreign objects from the battery compartment and clean the battery compartment with a damp cloth.
- Clean the electrical contacts in the battery compartment with a paintbrush or soft brush.

14.2 Cleaning the Battery

- Clean the battery with a damp cloth.

14.3 Cleaning the Charger

- Disconnect the mains plug from the power supply.
- Clean the charger with a damp cloth.
- Clean the charger's electrical contacts with a paintbrush or a soft brush.

15 Maintenance and Repairs

15.1 Servicing and Repairing the Blower

The blower cannot be serviced or repaired by the user.

- If your blower has a malfunction or is damaged or requires servicing: Contact your STIHL servicing dealer.

15.2 Servicing and Repairing the Battery

The battery requires no servicing and cannot be repaired.

- If the battery has a malfunction or is damaged: Replace the battery.


15.3 Servicing and repairing the charger

The charger does not need servicing and it cannot be repaired.

- If the charger has a malfunction or is damaged: Replace the charger.
- If the connecting cable has a malfunction or is damaged: Do not use the charger and have the connecting cable replaced by a STIHL servicing dealer.

16 Troubleshooting

16.1 Troubleshooting the blower or battery

Error	LEDs on the blower	Cause	Remedy
The blower does not start when switched on.	1 LED flashing green.	State of charge of the battery is too low.	► Charge the battery.
	1 LED lights up steady red.	The battery is too warm or too cold.	► Remove the battery. ► Allow the battery to cool down or warm up.
	1 LED flashes red.	There is an error in the blower.	► Remove battery and reinsert it. ► Switch on the blower. ► If 1 LED continues to flash red: Do not use the blower and contact a STIHL authorized dealer.
	1 LED lights up red.	The blower is too warm.	► Remove the battery. ► Allow the blower to cool down.
	1 LED flashes red.	There is an error in the battery.	► Remove the battery. ► Clean the electrical contacts in the battery compartment. ► Insert the battery. ► Switch on the blower. ► If 1 LED continues to flash red: Do not use the battery and contact a STIHL authorized dealer.
		No electrical contact between the blower and the battery.	► Remove the battery. ► Clean the electrical contacts in the battery compartment. ► Insert the battery.
The blower cuts out during operation.		The blower or the battery is damp.	► Allow blower or battery to dry,  17.6.
	1 LED lights up red.	The blower is too warm.	► Remove the battery. ► Allow the blower to cool down.
		There is an electrical error.	► Remove battery and reinsert it. ► Switch on blower.
The blower operating time is too short.		The battery is not fully charged.	► Fully charge the battery.
		The battery service life has been exceeded.	► Replace the battery.

16.2 Troubleshooting the Charger

Error	LED on Charger	Cause	Remedy
Battery is not being charged.	1 LED lights up orange.	The battery or the charger is too warm or too cold.	► Leave the battery inserted in charger. The charging starts automatically as soon as the permitted temperature range is reached.
	1 LED flashes red.	There is no electrical connection between the charger and battery.	► Remove the battery. ► Clean contacts on charger. ► Insert the battery.
		There is an error in the charger.	► Remove the battery.

Error	LED on Charger	Cause	Remedy
			<ul style="list-style-type: none"> ▶ Disconnect the mains plug from the socket. ▶ Wait for 1 minute. ▶ Insert the mains plug in a power outlet. ▶ If the 1 LED continues to flash red: Do not use the charger and instead contact a STIHL authorized dealer.
		There is an error in the battery.	<ul style="list-style-type: none"> ▶ Do not use the battery and instead contact a STIHL authorized dealer.
		The electrical connection to the charger was interrupted.	<ul style="list-style-type: none"> ▶ Remove the battery. ▶ Disconnect the mains plug from the socket. ▶ Wait for 1 minute. ▶ Insert the mains plug in a power outlet.
		There is an error in the charger.	<ul style="list-style-type: none"> ▶ Do not use the charger and instead contact a STIHL dealer for assistance.
The charger does not start up and does not run a self-test.	The LEDs does not light up green for about 1 second.	The electrical connection to the charger was interrupted.	<ul style="list-style-type: none"> ▶ Disconnect the mains plug from the socket. ▶ Wait for 1 minute. ▶ Insert the mains plug in a power outlet.
		There is an error in the charger.	<ul style="list-style-type: none"> ▶ Do not use the charger and instead contact a STIHL dealer for assistance.

17 Specifications

17.1 STIHL BGA 30.0 Blower

- Approved battery: STIHL AS
- Blowing force: 5 N
- Maximum air velocity: 43 m/s
- Average air velocity: 36.1 m/s
- Air throughput: 430 m³/h
- Weight without battery: 1.5 kg

For runtime, see www.stihl.com/battery-life.

17.2 STIHL AS battery

- Battery technology: Lithium-ion
- Voltage: 10.8 V
- Capacity in Ah: see rating label
- Energy content in Wh: see rating label
- Weight in kg: See rating label

17.3 Charger STIHL ALS 31.0

- Rated voltage: see the rating plate
- Frequency: see rating plate
- Rated power: see rating plate
- Charging current: See the rating plate
- Maximum energy content of approved STIHL AS battery STIHL AS: 12.5 Ah

For charging times, see www.stihl.com/charging-times.

17.4 Extension Cords

If an extension cord is used, the cross sectional area of its conductors must meet the following

minimum requirements – depending on the line voltage and length of the extension cord:

If rated voltage on the rating label is 220V to 240V:

- Cord length up to 20 m: AWG 15 / 1.5 mm²
- Cord length 20 m up to 50 m: AWG 13 / 2.5 mm²

If rated voltage on the rating label is 100V to 127V:

- Cord length up to 10 m: AWG 14 / 2.0 mm²
- Cord length 10 m up to 30 m: AWG 12 / 3.5 mm²

17.5 Temperature limits



WARNING

- The battery is not protected against all ambient conditions. If the battery is exposed to certain environmental conditions, it may catch fire or explode. This may result in serious injury to people and damage to property.
 - ▶ Do not charge the battery below -20°C or above 50°C.
 - ▶ Do not use the blower, battery or charger below -20°C or above +50°C.
 - ▶ Do not store the blower, battery or charger below -20°C or above +70°C.

17.6 Recommended temperature ranges

For optimum performance of the blower, battery and charger, observe the following temperature ranges:

- Charging: 5°C to 40°C
- Use: - 10 °C to + 40 °C
- Storage: - 20 °C to + 50 °C

If the battery is charged, used or stored outside the recommended temperature ranges, performance may be reduced.

If the battery is wet or moist, allow the battery to dry for at least 48 h between 15°C and 50°C and with less than 70% humidity. Higher humidity may extend the drying time.

17.7 Sound and vibration values

The K-value for the sound pressure level is 2 dB(A). The K value for the sound power level is 2 dB(A). The K value for the vibration level is 2 m/s².

STIHL recommends wearing hearing protection.

- Sound pressure level L_{pA} measured in accordance with IEC 62841-4-6: 73 dB(A).
- Sound power level L_{WA} measured in accordance with IEC 62841-4-6: 84 dB(A).
- Vibration value a_{hv} measured according to IEC 62841-4-6: Control handle: 0.5 m/s².

The sound and vibration values indicated were measured according to a standardized test method and can be used as a basis for comparing electric power tools. The actual sound and vibration levels may vary from the values indicated, depending on the type of application and the accessories used. The sound and vibration levels indicated can be used for an initial estimate of the sound and vibration load. The actual sound and vibration stress has to be estimated. The times can be taken into account in the estimate when the electric power tool is switched off and also when it is switched on but running without any load.

For information on compliance with the Physical Agents (Vibration) Directive 2002/44/EC, see www.stihl.com/vib.


17.8 REACH

REACH is an EC regulation and stands for the Registration, Evaluation, Authorisation and Restriction of Chemical substances.

For information on compliance with the REACH regulation see www.stihl.com/reach.

18 Spare Parts and Accessories

18.1 Spare parts and accessories

STIHL  These symbols indicate original STIHL spare parts and original STIHL accessories.

STIHL recommends the use of original STIHL spare parts and accessories.

Despite ongoing market observation, STIHL is unable to judge the reliability, safety and suitability of other manufacturers' spare parts and accessories; accordingly, STIHL cannot warrant for the use of those parts.

Original STIHL spare parts and original STIHL accessories are available from STIHL dealers.

19 Disposal

19.1 Disposal of Blower, Battery and Charger

Contact the local authorities or your STIHL dealer for information on disposal.

Improper disposal can be harmful to health and pollute the environment.

- ▶ Take STIHL products including packaging to a suitable collection point for recycling in accordance with local regulations.
- ▶ Do not dispose with domestic waste.

20 EC Declaration of Conformity

20.1 STIHL BGA 30.0 blower

ANDREAS STIHL AG & Co. KG
Badstraße 115
D-71336 Waiblingen

Germany

declares under our sole responsibility that

- Category: Battery blower
- Manufacturer's brand: STIHL
- Model: BGA 30.0
- Serial identification number: BA08

conforms to the relevant provisions of Directives 2011/65/EU, 2006/42/EC, 2014/30/EU and 2000/14/EC and has been developed and manufactured in compliance with the following standards in the versions valid on the date of production: EN 55014-1, EN 55014-2 and EN 62841-1, taking account of standards IEC 62841-4-6 and prEN 62841-4-6.

The measured and guaranteed equivalent sound power level has been determined in accordance with Directive 2000/14/EC, Annex V.

- Measured sound power level: 84 dB(A)
- Guaranteed sound power level: 86 dB(A)

The technical documents are stored at
ANDREAS STIHL AG & Co. KG Produktzulassung.

The year of construction, the country of manufacture and the machine number are shown on the blower.

Waiblingen, 01.07.2024

ANDREAS STIHL AG & Co. KG

pp 

Robert Olma, Vice President, Regulatory Affairs
& Global Governmental Relations

21 UKCA Declaration of Conformity

21.1 STIHL BGA 30.0 blower

**UK
CA**

ANDREAS STIHL AG & Co. KG
Badstraße 115
D-71336 Waiblingen
Germany

declares under our sole responsibility that

- Category: Battery blower
- Manufacturer's brand: STIHL
- Model: BGA 30.0
- Serial identification number: BA08

complies with the relevant provisions of the UK regulations The Restriction of the Use of Certain Hazardous Substances in Electrical and Electronic Equipment Regulations 2012, Supply of Machinery (Safety) Regulations 2008, Electromagnetic Compatibility Regulations 2016 and Noise Emission in the Environment by Equipment for use Outdoors Regulations 2001 and has been developed and manufactured in accordance with the versions of the following standards valid on the date of manufacture: EN 55014-1, EN 55014-2 and EN 62841-1, taking into account standards IEC 62841-4-6 and prEN 62841-4-6.

The measured and guaranteed sound power levels have been determined in accordance with UK regulations Noise Emission in the Environment by Equipment for use Outdoors Regulations 2001, Schedule 8.

- Measured sound power level: 84 dB(A)
- Guaranteed sound power level: 86 dB(A)

The technical documents are stored at
ANDREAS STIHL AG & Co. KG Produktzulassung.

The year of construction, the country of manufacture and the machine number are shown on the blower.

Waiblingen, 01.07.2024

ANDREAS STIHL AG & Co. KG

pp 

Robert Olma, Vice President, Regulatory Affairs
& Global Governmental Relations

22 Addresses

www.stihl.com

23 General Power Tool Safety Warnings

23.1 Introduction

This chapter reproduces the pre-formulated, general safety precautions specified in the IEC 62841 standard for hand-held motor-operated electric tools.

STIHL is obliged to publish these texts.

The safety precautions and warnings on avoiding an electric shock given under "Electrical Safety" do not apply to STIHL cordless products.



WARNING

- **Read all safety warnings, instructions, illustrations and specifications provided with this power tool.** Failure to follow all instructions listed below may result in electric shock, fire and/or serious injury. **Save all warnings and instructions for future reference.**

The term "electric power tool" in the safety warnings refers to mains-operated (corded) power tools or battery-operated (cordless) power tools.

23.2 Work area safety

- a) **Keep work area clean and well lit.** Cluttered or dark areas invite accidents.
- b) **Do not operate power tools in explosive atmospheres, such as in the presence of flammable liquids, gases or dust.** Power tools create sparks which may ignite the dust or fumes.
- c) **Keep children and bystanders away while operating a power tool.** Distractions can cause you to lose control.

23.3 Electrical safety

- a) **Power tool plugs must match the outlet.** Never modify the plug in any way. **Do not use any adapter plugs with earthed (grounded) power tools.** Unmodified plugs and matching outlets will reduce risk of electric shock.
- b) **Avoid body contact with earthed or grounded surfaces, such as pipes, radiators, ranges and refrigerators.** There is an increased risk of electric shock if your body is earthed or grounded.
- c) **Do not expose power tools to rain or wet conditions.** Water entering a power tool will increase the risk of electric shock.
- d) **Do not abuse the cord. Never use the cord for carrying, pulling or unplugging the power tool. Keep cord away from heat, oil, sharp edges or moving parts.** Damaged or entangled cords increase the risk of electric shock.
- e) **When operating a power tool outdoors, use an extension cord suitable for outdoor use.** Use of a cord suitable for outdoor use reduces the risk of electric shock.
- f) **If operating a power tool in a damp location is unavoidable, use a residual current device (RCD) protected supply.** Use of an RCD reduces the risk of electric shock.

23.4 Personal safety

- a) **Stay alert, watch what you are doing and use common sense when operating a power tool. Do not use a power tool while you are tired or under the influence of drugs, alcohol or medication.** A moment of inattention while operating power tools may result in serious personal injury.
- b) **Use personal protective equipment. Always wear eye protection.** Protective equipment such as a dust mask, non-skid safety shoes,

hard hat or hearing protection used for appropriate conditions will reduce personal injuries.

- c) **Prevent unintentional starting. Ensure the switch is in the off-position before connecting to power source and/or battery pack, picking up or carrying the tool.** Carrying power tools with your finger on the switch or energising power tools that have the switch on invites accidents.
- d) **Remove any adjusting key or wrench before turning the power tool on.** A wrench or a key left attached to a rotating part of the power tool may result in personal injury.
- e) **Do not overreach. Keep proper footing and balance at all times.** This enables better control of the power tool in unexpected situations.
- f) **Dress properly. Do not wear loose clothing or jewellery. Keep your hair and clothing away from moving parts.** Loose clothes, jewellery or long hair can be caught in moving parts.
- g) **If devices are provided for the connection of dust extraction and collection facilities, ensure these are connected and properly used.** Use of dust collection can reduce dust-related hazards.
- h) **Do not let familiarity gained from frequent use of tools allow you to become complacent and ignore tool safety principles.** A careless action can cause severe injury within a fraction of a second.

23.5 Power tool use and care

- a) **Do not force the power tool. Use the correct power tool for your application.** The correct power tool will do the job better and safer at the rate for which it was designed.
- b) **Do not use the power tool if the switch does not turn it on and off.** Any power tool that cannot be controlled with the switch is dangerous and must be repaired.
- c) **Disconnect the plug from the power source and/or remove the battery pack, if detachable, from the power tool before making any adjustments, changing accessories, or storing power tools.** Such preventive safety measures reduce the risk of starting the power tool accidentally.
- d) **Store idle power tools out of the reach of children and do not allow persons unfamiliar with the power tool or these instructions to**

operate the power tool. Power tools are dangerous in the hands of untrained users.

- e) **Maintain power tools and accessories.** Check for misalignment or binding of moving parts, breakage of parts and any other condition that may affect the power tool's operation. If damaged, have the power tool repaired before use. Many accidents are caused by poorly maintained power tools.
- f) **Keep cutting tools sharp and clean.** Properly maintained cutting tools with sharp cutting edges are less likely to bind and are easier to control.
- g) **Use the power tool, accessories and tool bits etc. in accordance with these instructions, taking into account the working conditions and the work to be performed.** Use of the power tool for operations different from those intended could result in a hazardous situation.
- h) **Keep handles and grasping surfaces dry, clean and free from oil and grease.** Slippery handles and grasping surfaces do not allow for safe handling and control of the tool in unexpected situations.

23.6 Battery tool use and care

- a) **Recharge only with the charger specified by the manufacturer.** A charger that is suitable for one type of battery pack may create a risk of fire when used with another battery pack.
- b) **Use power tools only with specifically designated battery packs.** Use of any other battery packs may create a risk of injury and fire.
- c) **When battery pack is not in use, keep it away from other metal objects, like paper clips, coins, keys, nails, screws or other small metal objects, that can make a connection from one terminal to another.** Shorting the battery terminals together may cause burns or a fire.
- d) **Under abusive conditions, liquid may be ejected from the battery; avoid contact.** If contact accidentally occurs, flush with water. If liquid contacts eyes, additionally seek medical help. Liquid ejected from the battery may cause irritation or burns.
- e) **Do not use a battery pack or tool that is damaged or modified.** Damaged or modified batteries may exhibit unpredictable behaviour resulting in fire, explosion or risk of injury.
- f) **Do not expose a battery pack or tool to fire or excessive temperature.** Exposure to fire or

temperature above 130 °C may cause explosion.

- g) **Follow all charging instructions and do not charge the battery pack or tool outside the temperature range specified in the instructions.** Charging improperly or at temperatures outside the specified range may damage the battery and increase the risk of fire.

23.7 Service

- a) **Have your power tool serviced by a qualified repair person using only identical replacement parts.** This will ensure that the safety of the power tool is maintained.
- b) **Never service damaged battery packs.** Service of battery packs should only be performed by the manufacturer or authorized service providers.

23.8 Safety Information for Blowers

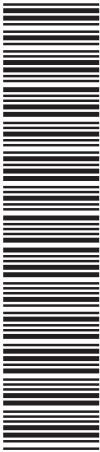
- a) **Do not use your blower in bad weather, especially during thunderstorms.** This reduces the risk of being struck by lightning.
- b) **Wear safety glasses and hearing protection.** Wearing suitable personal protective equipment will reduce the risk of injury.
- c) **Always wear non-slip, protective shoes when operating the blower. Never work barefoot or with open sandals.** This will reduce the risk of a foot injury.
- d) **Do not wear loose fitting clothing or items such as scarves, cords, chains, ribbons, etc., that could be sucked into the air inlet vent. Tie up your hair or cover it to prevent it from being sucked into the air inlet vent.** The sucking of any of these items into the air inlet vent may increase the risk of injury.
- e) **Keep your blower at a distance from other people during operation.** Deflected waste may increase the risk of injury.
- f) **Never aim the blower nozzle in the direction of people, animals or windows.** Operate the device with particular attention when clearing waste away from fixed objects, such as trees, cars or walls, from which waste may be deflected. Deflected parts may increase the risk of injury.
- g) **Do not use the blower to clear burning or smoking waste, such as cigarettes, matches or ash.** These sources of ignition may increase the risk of fire.

- h) **Do not touch the fan while it is still turning. Switch off the blower and wait until the fan stands still before removing a part that provides access to the fan.** This will reduce the risk of injury due to moving parts.
- i) **Before removing trapped cuttings or servicing the blower, ensure that the switch is turned off.** An unexpected startup of the blower while removing trapped cuttings or during servicing may increase the risk of injury.

www.stihl.com



0458-062-0102-A



0458-062-0102-A